



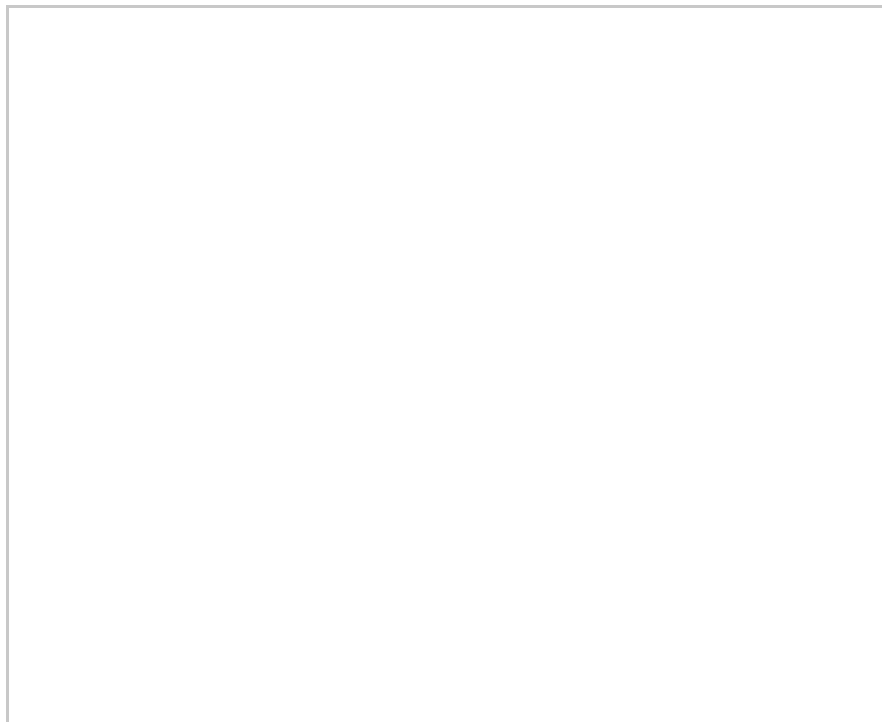
Apartment 306, St Martins Gate Worcester Street

Birmingham, B2 4BB

£725 PCM



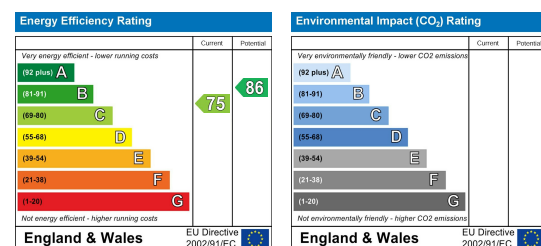
Floor Plan



Area Map



Energy Efficiency Graph



Viewing

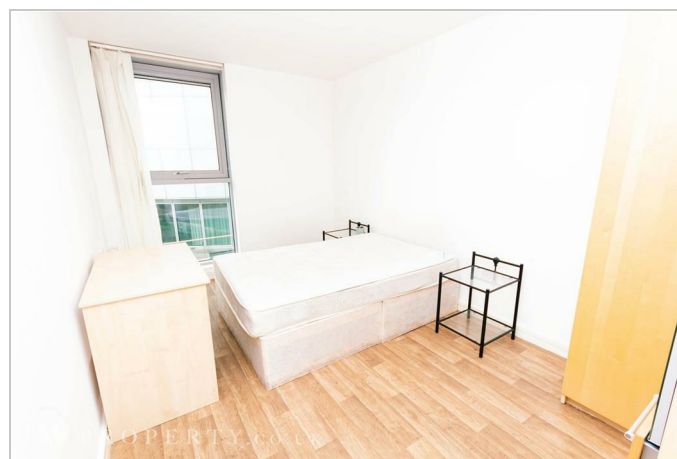
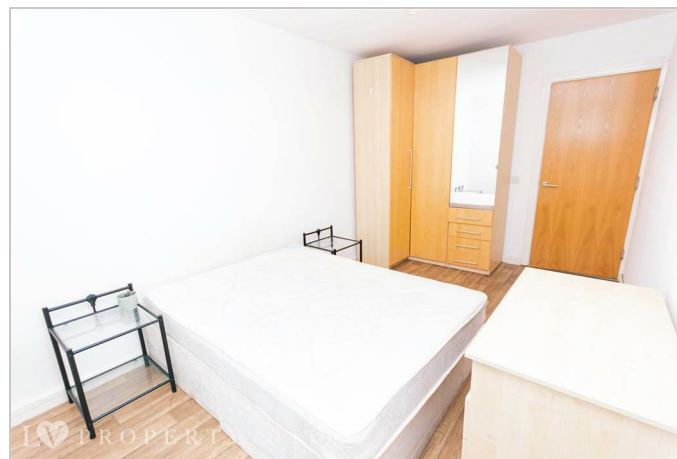
Please contact our LV PROPERTY Office on 01212857575 if you wish to arrange a viewing appointment for this property or require further information.

- TWO BEDROOM APARTMENT ■ CITY CENTRE LOCATION
- 30 SECONDS WALK TO ■ FULLY FURNISHED BULLRING/GRAND CENTRAL
- 24HR CONCIERGE ■ MUST VIEW

LV PROPERTY are proud to introduce this luxurious, two bedroom apartment situated in Birmingham City Centre. The beautiful complex is set in a prime location, adjacent to the City's most recognisable icons: Bullring Shopping Centre and New Street Station.

This stylish, two bed comes fully furnished and offers everything a city professional would require. The apartment offers a good size lounge/dining area with an open-plan kitchen fitted with a full range of built in appliances. Then leading off the hallway to two sizeable double bedrooms and a family bathroom with mixer shower tap to bath. The apartment benefits from a modern range of furniture, electric and heating and amazing city views.

This property is also located by local amenities shops, restaurants, bars and cafes. It also has great transport links.



These particulars, whilst believed to be accurate are set out as a general outline only for guidance and do not constitute any part of an offer or contract. Intending purchasers should not rely on them as statements of representation of fact, but must satisfy themselves by inspection or otherwise as to their accuracy. No person in this firm's employment has the authority to make or give any representation or warranty in respect of the property.



0121 285 7575
www.lvproperty.co.uk

157c Warstone Lane, Jewellery Quarter,
Birmingham, West Midlands, B18 6NZ